

TESTIMONIALS

"I received the reports and they are awesome! Thank you so much. It is very interesting to read and makes so much sense to me. Now my trainer and I are taking the next steps to help Allie."

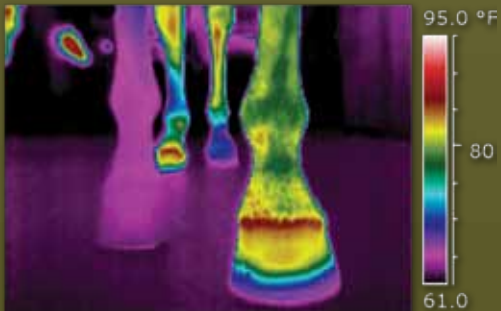
Amanda Marcus

"My horse was examined and they found a bulging disc in his back where the IR image showed a hot spot."

Mark Fox

BEFORE SCAN:

"I am interested in having a scan of my horse that has been having leg issues for 5 months. After spending \$3500 on diagnostics we still have no answer as to where the problem is. I was told not to spend any more money and get another horse or get a \$3500 MRI. Currently she can't do anything other than walk. She is my baby and I am devastated. Out of funds and emotions high could you give me an idea of cost? Thank you."



AFTER SCAN:

"I wanted to thank you for coming out and scanning 'Sally'. The interp was very enlightening, it makes the puzzle pieces fit."

Joanne Meissner

If you have questions about Equine Thermography, or would like to hear more testimonials, email us at info@equineir.com or view our website www.equineir.com



Altech FEI
World Equestrian Games™

Kentucky 2010

Official Vendor Partner of the 2010 World Equestrian Games

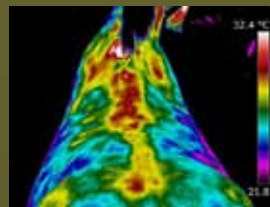
ABOUT EQUINEIR™

EquineIR™ is an International Network of Certified Thermographers who have been trained in the application of Equine Thermography. Equine scans can be done at your local veterinary office or your barn location. Call our office today or view our website to find out more information and to locate a certified technician in your area.



INTERPRETATION

EquineIR™ is aligned with the InterpretIR.com Network. InterpretIR.com joins your EquineIR™ trained Thermographer with Veterinarians specializing in Thermography to create a detailed graphic medical evaluation of your photo EquineIR™ report. Please consult with your EquineIR™ thermographer for more information.

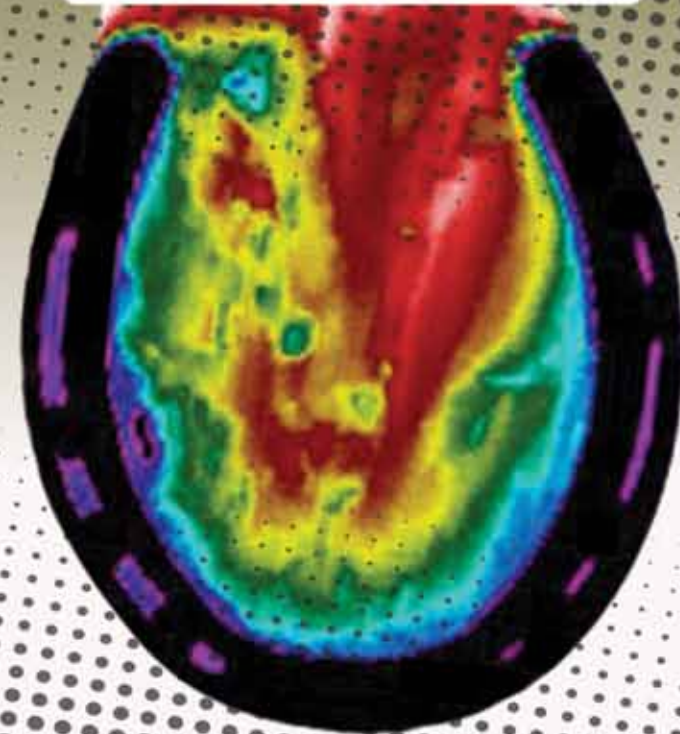


"Kissing Spines"



*Stop Guessing,
Start Knowing!*

Whether you are buying, selling or just looking for a routine infrared scan of your horse, EquineIR™ can prove invaluable to your finances and the horse's health.



1-888-SCAN-4-IR

(1-888-722-6447)

www.equineir.com • info@equineir.com

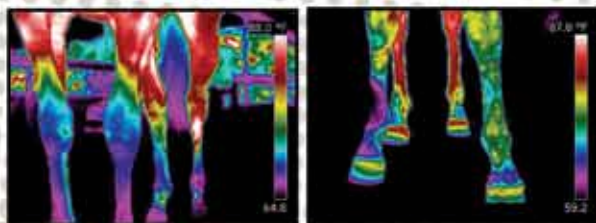
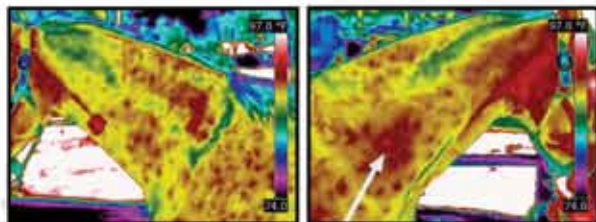
Before Equine Thermography, veterinarians could only locate a problem with observation or palpation but with equine thermography, an abnormality can show tissue that's stressed before the affected tissue becomes damaged.

- **PRE-PURCHASE**
- **HOOF BALANCING**
- **INFLAMMATION**
- **GENERAL DIAGNOSTICS & PREVENTIVE MEDICINE**
- **PRE-EVENT IMAGING**
- **SADDLE FIT**
- **MUSCLE/NERVE INJURY**

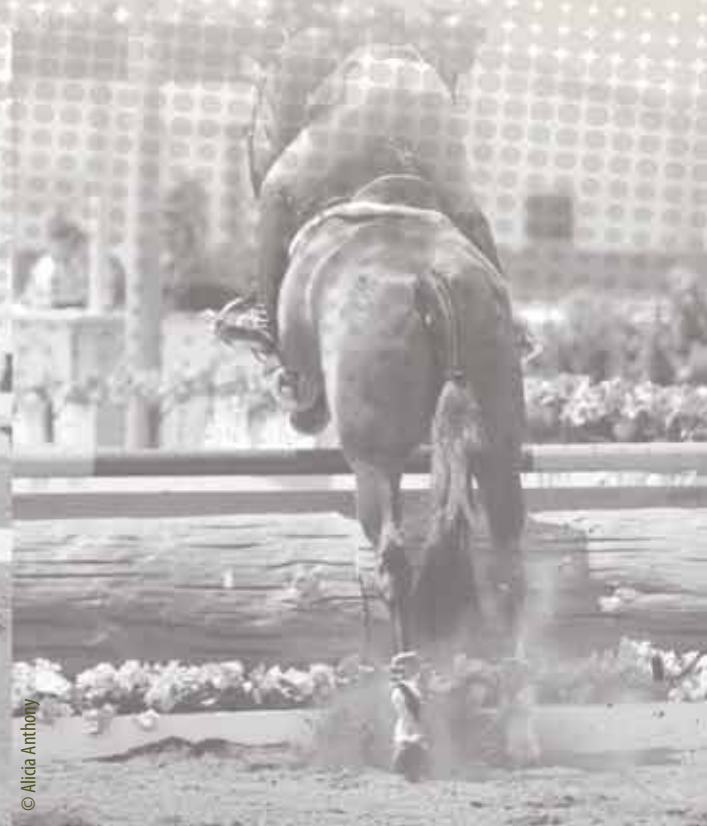


© Epelding Photography

Since animals cannot speak, it has been difficult for caretakers to truly identify hidden or masked conditions. Now with infrared thermal imaging, many of these physiological and anatomical issues are exposed at a much earlier stage. Early detection = early prevention.



© Alicia Anthony

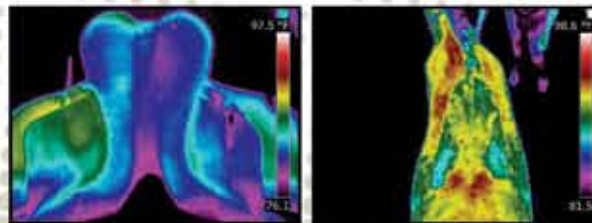


© Alicia Anthony

- Anatomical imaging, such as x-ray, lacks specificity and fails in the ability to see soft tissue conditions.
- Physiological imaging, such as infrared imaging has the ability to not only see tissue conditions but can also recognize areas that are indicative to anatomical issues.

SADDLE FIT

A horse's saddle should fit correctly and have even bearing on the horse's back. A thermal review of the horse and the saddle can show when pressure points are unevenly distributed, therefore causing discomfort to the horse and rider.



BENEFITS

- Non-Invasive and completely safe (*No harmful radiation*)
- About 15-20 minutes for a full horse scan
- Scans are done at your location, you won't have to trailer
- Reports are reviewed and interpreted by a Veterinarian specialized in Equine Thermography
- Costs are reasonable and include Veterinary interpretation. Please submit your request via our website for complete pricing in your area.

www.equineir.com